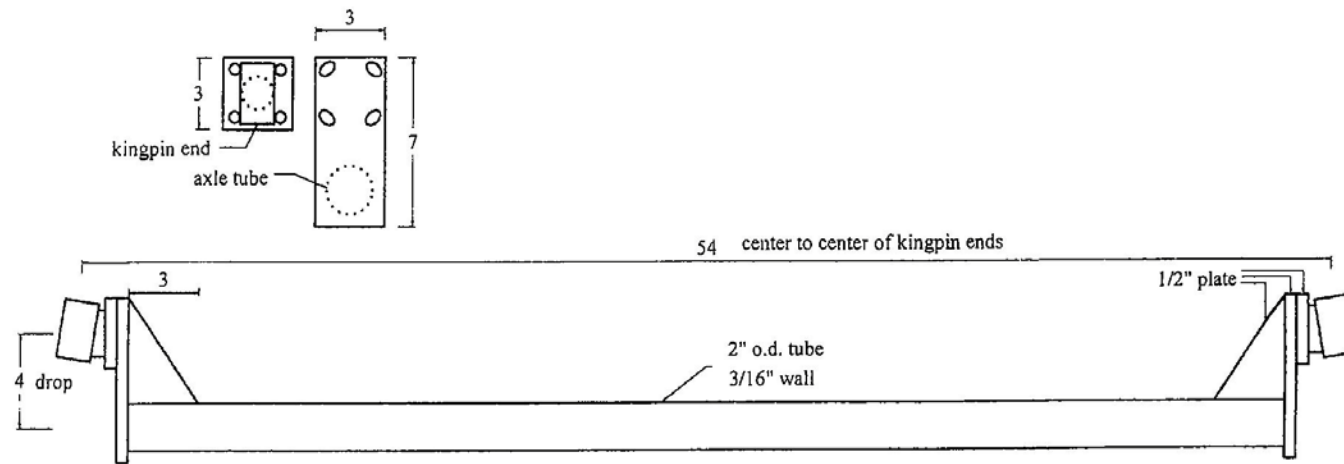
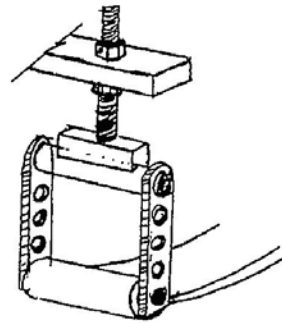


Vintage Racing Organization of America

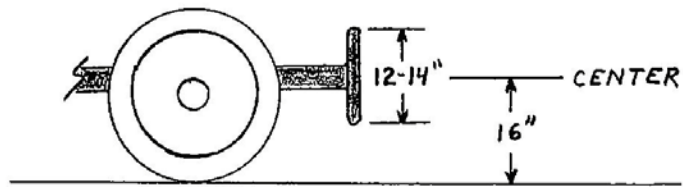
VROA Axle Specifications



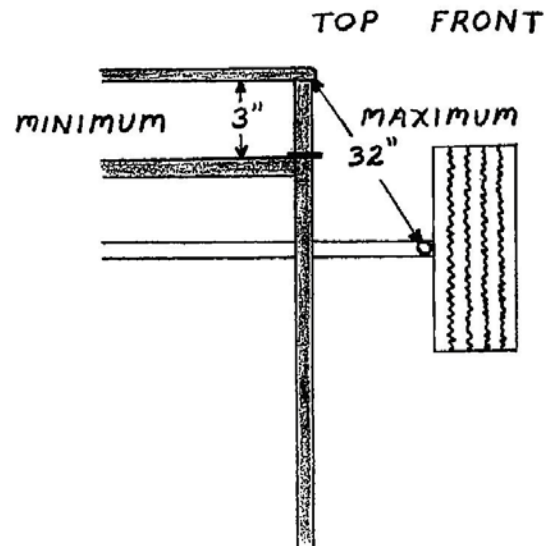
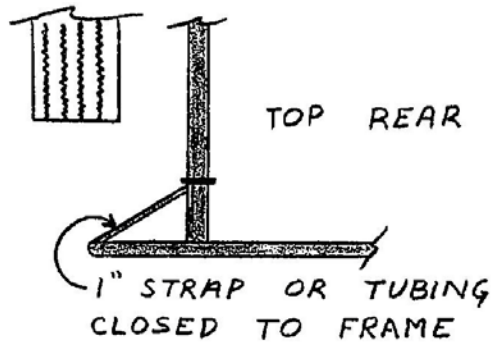
VROA approved adjustable shackle



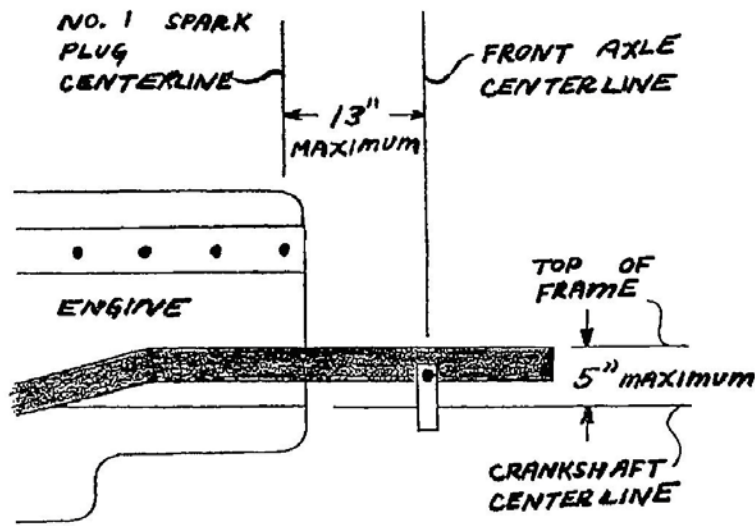
# CRASH GUARDS



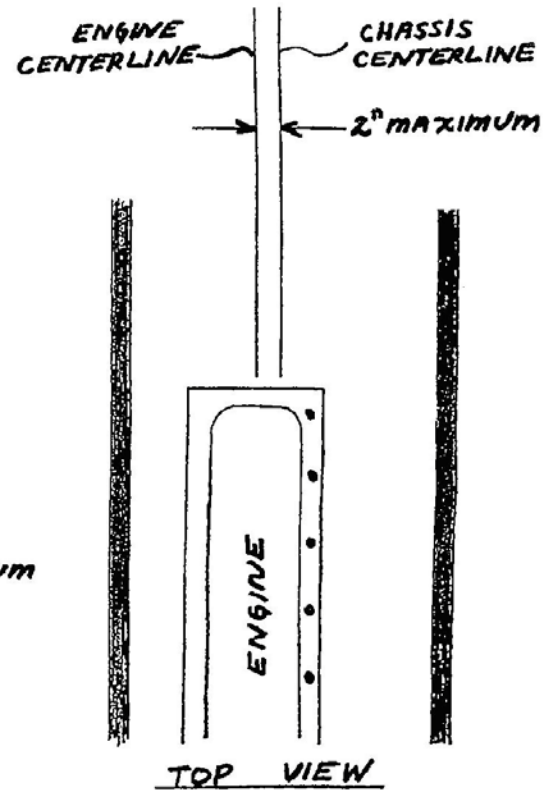
SIDE FRONT AND REAR



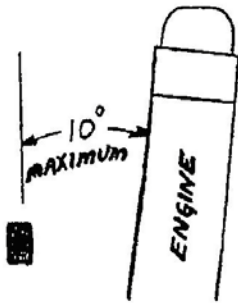
# ENGINE LOCATION



SIDE VIEW

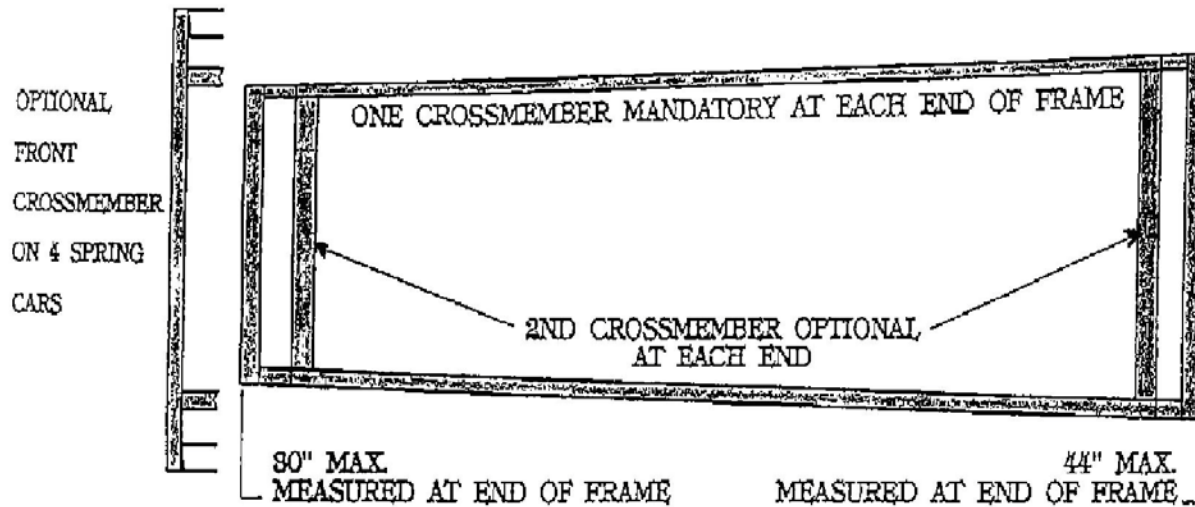
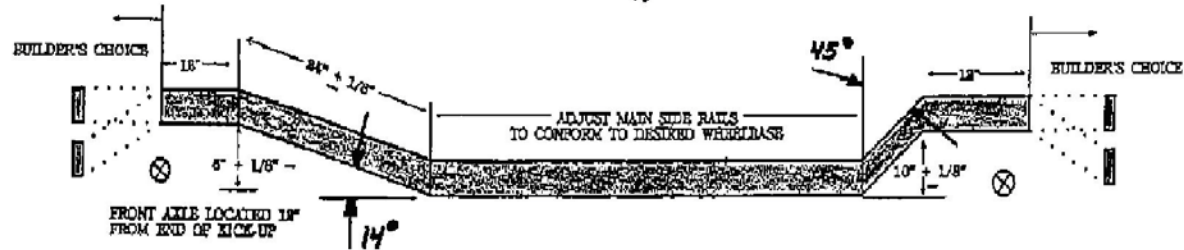


TOP VIEW



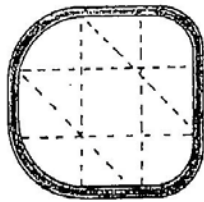
FRAME  
FRONT VIEW

## FRAME REQUIREMENTS

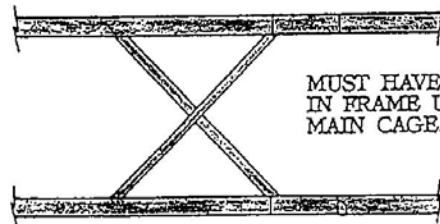


ENTIRE FRAME MUST BE 2" X 3" X .125" WALL THICKNESS.

## ROLL CAGE REQUIREMENTS

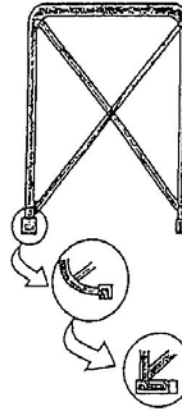


ROLL CAGE MUST HAVE  
2 PROTECTION BARS IN  
ROOF. (DOTTED LINES  
SHOW SUGGESTED  
POSITION ONLY.)

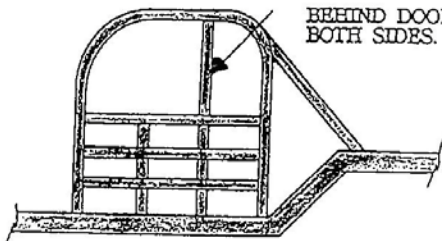


MUST HAVE X  
IN FRAME UNDER  
MAIN CAGE.

REAR

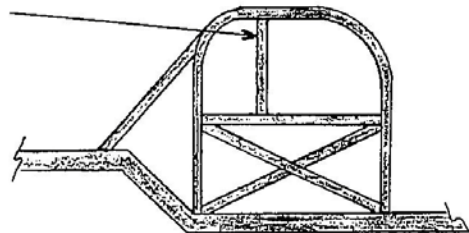


OPTIONAL METHOD  
FOR MOUNTING  
CAGE ON LEFT  
SIDE ONLY.



BEHIND DOOR POST  
BOTH SIDES.

ALL 90° JOINTS IN ROLL CAGE MUST BE GUSSETED.



OPTIONAL RIGHT SIDE DOOR BARS